

# ALPENINOX

**Crio Tech 500**  
**1 door prostore cabinet 470lt,**  
**0+10°C, AISI 304, remote, R134a**

ITEM #

MODEL #

NAME #

SIS #

AIA #



729527 (APS04R1FR)

1-door prostore cabinet 470lt,  
0+10°C, AISI 304, remote,  
R134a

## Short Form Specification

### Item No.

Full door refrigerator constructed in 304 AISI stainless steel with external bottom panel in anti-corrosive material. Large digital display featuring humidity selection button (3 preset level), cabinet temperature display and setting and turbo frost cycle (to rapidly cool warm loads). HACCP-compliant control with alarms and history. IQ defrost to defrost only when required with automatic evaporation of defrost water. Optimized airflow provides even temperature distribution on all grids. Fitted with 65 mm-thick polyurethane insulating foam. Self-closing, on-site reversible door features microswitch to switch off the fan when the door is opened. Hidden evaporator to guarantee higher storage capacity and less corrosion problems. Remote refrigeration unit; ventilated operation; Interior LED light.

## Main Features

- IQ Defrost: fully automatic defrost starts only when ice is actually building-up in the evaporator.
- Large digital white-digit display with humidity selection button (3 preset level), cabinet temperature display and setting and turbo frost cycle (to rapidly cool warm loads).
- IPX5 frontal water protection.
- Large digital white-digit display with cabinet temperature display and setting, and possibility to select the desired levels of humidity. Bluetooth technology included allows to keep HACCP historical data and download them through the app.
- Alpeninox Fridge Control APP make the life easier for our customers:
  - Monitor safety of preservation process thanks to HACCP data & alarms for precise control
  - Save time and easy data management having the possibility to send the HACCP information in excel format directly to e-mail address
  - Quick operations: set the cabinet temperature/humidity/turbocooling and set date/hour
- Fully compliant HACCP digital control: when temperature exceeds critical limits, acoustic and visual alarms are activated. Up to two months of event are kept in memory.
- Large storage area suitable to contain 520x442 mm grids or shelves to improve net capacity.
- Optimized airflow within the chamber guarantees uniformity of temperature on all grids.
- Hidden evaporator thus guaranteeing higher storage capacity and less corrosion problems.
- Greater storage space: internal structure with numerous charging positions available to host grids, ensuring higher net capacity.
- Adjustable temperature range from 0°C to +10°C.
- Model requires only 1 phase 230V/50Hz supply and can be plugged straight into an existing power socket.
- Tropicalized unit.
- Prearranged to fit RS485 port to facilitate connection to a remote computer and integrated HACCP systems.
- Complies with main international certification bodies and is CE marked.
- Self closing and on site reversible left/right doors.

APPROVAL:

Part of



Electrolux  
Professional  
Group

**ALPENINOX**  
www.alpeninox.com

## Construction

- Stainless steel AISI 304 external panels (galvanized external back).
- Lockable door.
- Inner cell with rounded corners, bottom pressed in only one piece.
- Stainless steel runners and supports easily disassembled.
- Internal components removable without the use of tools to facilitate cleaning operations.
- Pressed stainless steel door handle without joints gathering dust and dirt.
- Easy access to the main components for maintenance.
- Developed and produced in ISO 9001 and ISO 14001 certified factory.

## Sustainability

- CFC and HCFC free (ecological refrigerant type: R134a, - gas in foam: cyclopentane).
- Insulation thickness: 65 mm of polyurethane injected with ecological foaming gas cyclopentane to ensure effective insulation with minimum energy consumption (thermal conductivity: 0,020 W/m\*K).
- Removable triple-chamber balloon magnetic gasket to improve insulation and reduce energy consumption and ease of cleaning.
- Optical door microswitch to stop the fan once the door is opened, thus minimizing energy waste.
- Interior LED light to save energy and for best internal visibility.

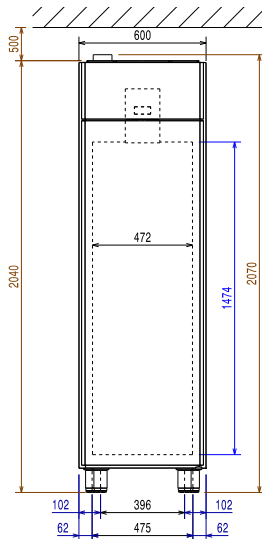
## Included Accessories

- |  |            |
|--|------------|
| • 1 of Pedal opening for cabinets                          | PNC 880324 |
| • 4 of Pair of runners for 470L and 720L prostore cabinets | PNC 880335 |
| • 5 of Rilsan-coated grid 520x442mm for Prostore 470l      | PNC 880342 |

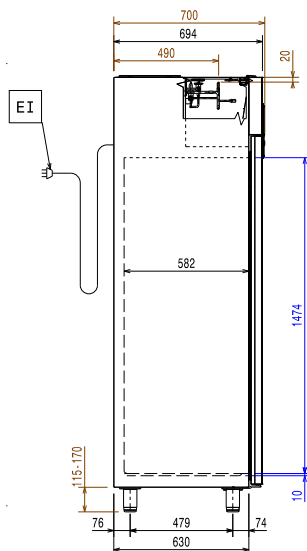
## Optional Accessories

- |   |            |                          |
|---|------------|--------------------------|
| • Stainless steel grid (520x442)                      | PNC 880321 | <input type="checkbox"/> |
| • Pedal opening for cabinets                          | PNC 880324 | <input type="checkbox"/> |
| • Kit 4 feet, height 200mm                            | PNC 880325 | <input type="checkbox"/> |
| • Kit of 4 feet-h=67 (marine)                         | PNC 880326 | <input type="checkbox"/> |
| • Kit pair of runners (marine)                        | PNC 880327 | <input type="checkbox"/> |
| • Base frame for 1/1GN rack for 470L prostore         | PNC 880328 | <input type="checkbox"/> |
| • Pair of runners for 470L and 720L prostore cabinets | PNC 880335 | <input type="checkbox"/> |
| • Rilsan-coated grid 520x442mm for Prostore 470l      | PNC 880342 | <input type="checkbox"/> |

### Front

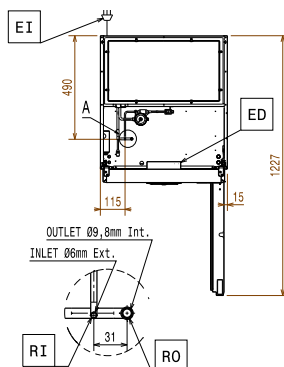


### Side



EI = Electrical inlet (power)  
RI = Refrigerant Inlet  
RO = Refrigerant Outlet

### Top



### Electric

Supply voltage: 200-240 V/1 ph/50/60 Hz  
Electrical power, max: 0.14 kW

### Capacity:

Number and type of grids (included): 4 - 520x442

### Key Information:

Door hinges:  
External dimensions, Width: 600 mm  
External dimensions, Depth: 700 mm  
External dimensions, Depth with Doors Open: 1226 mm  
External dimensions, Height: 2040 mm  
Number and type of doors: 1 Full  
Internal Dimensions, Width: 472 mm  
Internal Dimensions, Depth: 582 mm  
Internal Dimensions, Height: 1474 mm  
Height adjustment: 15/40 mm  
Type of external material: 304 AISI  
Type of internal material: 304 AISI  
Number of positions & pitch: 44; 22 mm  
Gross capacity: 470 lt

### Refrigeration Data

Control type: Digital  
Operating temperature min.: 0 °C  
Operating temperature max.: 10 °C  
Refrigeration type: R134a;R513A;R426A  
Operating mode: Ventilated  
Cooling unit: Remote  
Defrost type: By Air  
Suggested refrigeration power: 320 W  
Condition at evaporation temperature: -10 °C  
Condition at condensation temperature: 55 °C  
Condition at ambient temperature: 43 °C  
Connection pipes (remote) - outlet: 9.5 mm  
Connection pipes (remote) - inlet: 6 mm

\*Note:

Ref. Power calculated at a linear distance of 15 mt (piping)

### Sustainability

Noise level: